

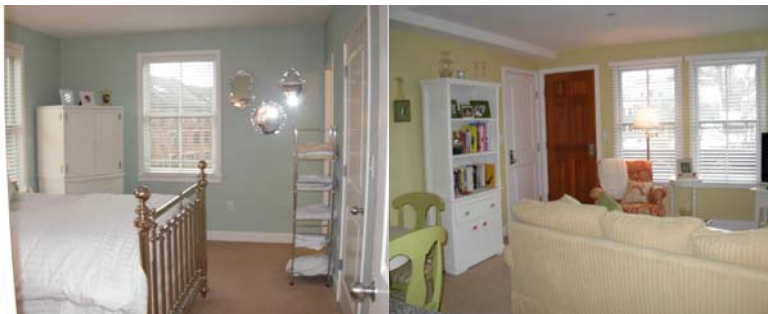
# AFFORDABLE HOUSING OPPORTUNITY

**The Foundry**  
**129 Merrimac Street – Unit #3 \$172,978.00**



Constructed in 2005, this is a second floor, garden-style 1 Bedroom, 1 Bath unit with a total of 736 square feet. The monthly condo association fee is \$124.80, and FY09 taxes were \$1,721.48. The unit includes electric heat and central air. To be eligible for this unit, you must demonstrate you meet the maximum income limits set by the U.S. Department of Housing and Urban Development. Current income limits are:

1-person household	2-person household	3-person household	4-person Household
\$ 46,300.00	\$ 52,950.00	\$ 59,550.00	\$ 66,150.00



Contact Rosemary Coulombe at 978-465-4465 the Community Development office in Newburyport City Hall for more information.