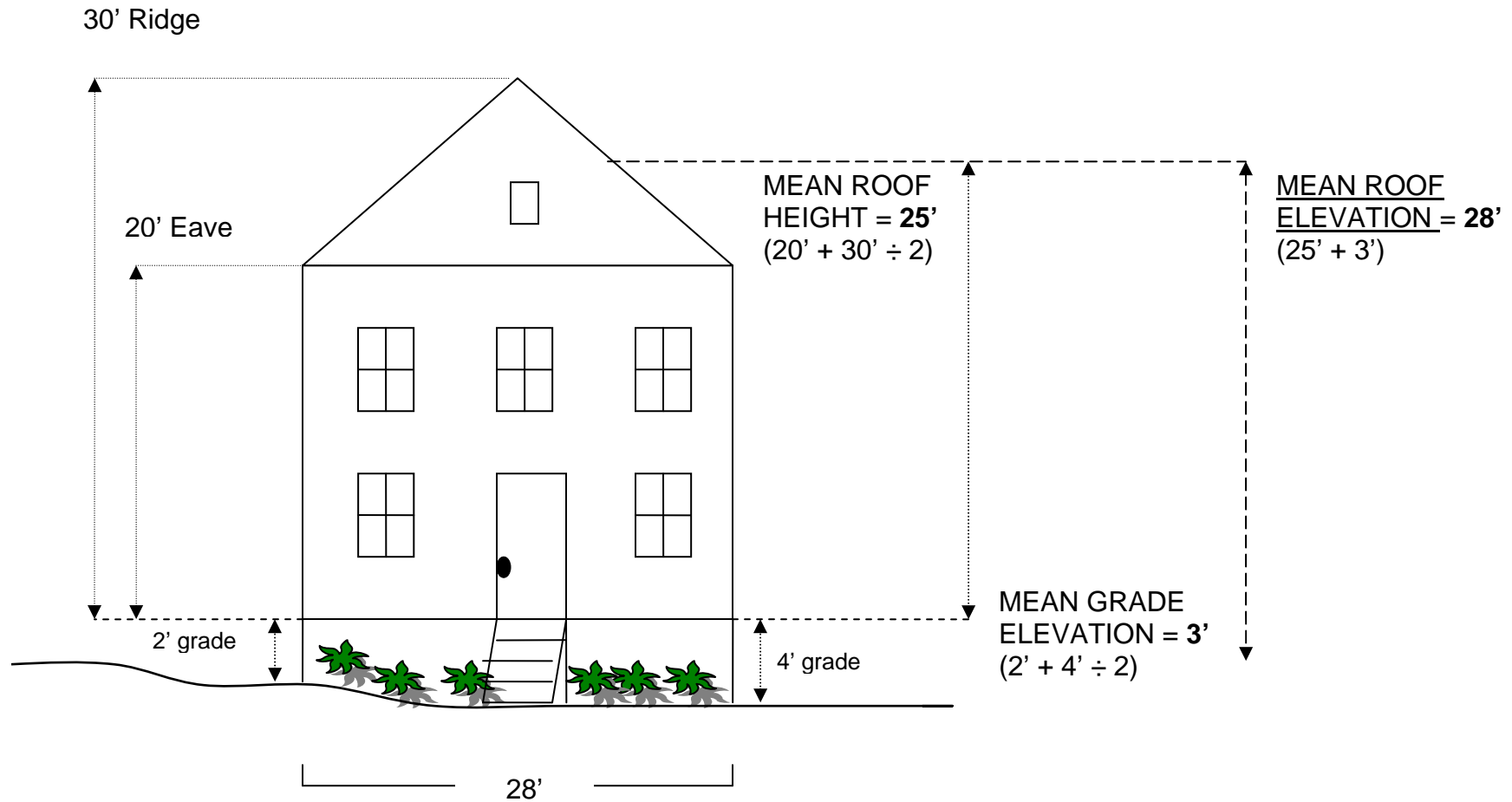


Sample Elevation Plan



Roof height (or mean roof elevation) is measured from the **mean grade elevation** (average grade around the perimeter of the building, or in this example, $2' + 4' \div 2 = 3'$) to the **mean roof height** (one-half the vertical distance from the eave to ridge, or in this example, $30' + 20' \div 2 = 25'$).